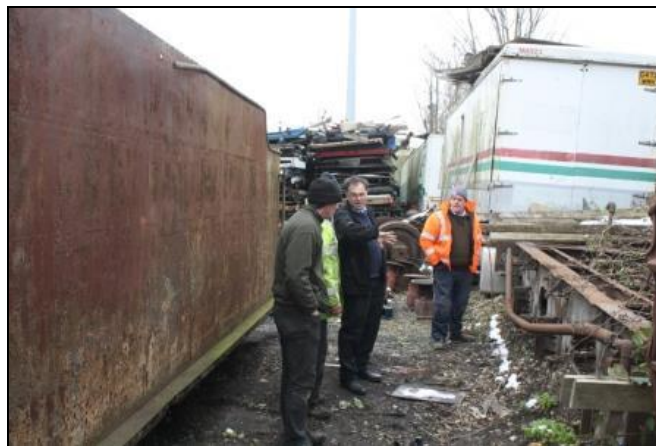




A follow up meeting with Moveright International and Emsley Crane Hire was held at Doncaster on 27<sup>th</sup> March to confirm details of the lifting work required and the opportunity was taken to recover some of the smaller items from the yard. Although conditions were quite bright when we first arrived, blustering snow soon moved in causing us to take refuge in one of the buildings on site to continue our discussions !

As can be seen from the accompanying photos, our tender body has now been separated from the frames ready for loading and the wheelsets and other parts have been recovered from the undergrowth. The tyres appear to be in remarkably good condition despite their many years in storage. The top view shows the right hand side of the tender which has been virtually unseen since the 1980's having been semi-protected from the elements by its close proximity to bushes and fencing. The photos below show one of the wheelsets plus the frames and the back of the tender body. The cramped conditions on site clearly illustrate why we need a crane to load everything and Andrew Goodman can be seen explaining our requirements to the Emsley rep.



I would like to thank our Members and friends once again for their magnificent response to our original appeal which generated sufficient funds to buy the tender. Donations have been in kind as well as in cash and recent contributions have included a LNER 'Drivers Notes' box for the cab from Steve Andrews and an offer to provide BR Crests from Mick Strickson of Trackside. However, even if no unforeseen problems are encountered on the day of the move, the cost of hiring in the crane will be £500 plus vat which was not included in our original budget. If you are able to help, please complete the form at the back of this Newsletter. Every donation will be greatly appreciated and all will be acknowledged in writing. Thank You.